



Richards Convention Florist, LLC d/b/a

# TEASLEY'S CONVENTION FLORIST

Taxpayer ID # 20-8142614

1813 Golf Club Road | Old Hickory, TN 37138

P: (615) 876-3695 F: (615) 876-9378

leigh@conventionflorist.com

www.conventionflorist.com

Like us on Facebook: facebook.com/leigh.convention

## FLORAL ORDER FORM

Show Name: The Expo at PowerExchange and TechAdvantage Booth Number: \_\_\_\_\_

Show Date: 3/10/2025 - 3/12/2025 Show Location: Georgia World Congress Center Booth Representative: \_\_\_\_\_

Exhibitor Name: \_\_\_\_\_ Credit Card #: \_\_\_\_\_

Firm Name: \_\_\_\_\_ Expiration Date: \_\_\_\_\_ (Visa, MC, AMEX) CVV #: \_\_\_\_\_

Billing Name: \_\_\_\_\_ Name on CC: \_\_\_\_\_

Billing Address: \_\_\_\_\_

City: \_\_\_\_\_ State: \_\_\_\_\_ Zip: \_\_\_\_\_

Phone: \_\_\_\_\_ Fax: \_\_\_\_\_ Cell: \_\_\_\_\_

Authorized Signature: \_\_\_\_\_ Email Address: \_\_\_\_\_

If you would like to specify color, size, type of flowers, please do so below. Prices start at \$75.

Qty \_\_\_\_\_ Tropical flowers Price \$ \_\_\_\_\_ each

Qty \_\_\_\_\_ Spring flowers Price \$ \_\_\_\_\_ each

Color: \_\_\_\_\_

Width: \_\_\_\_\_ Height: \_\_\_\_\_

Additional request: \_\_\_\_\_

\_\_\_\_\_

Not sure what you want? Just want a splash of color? Let Teasley's designers choose your fresh seasonal flowers!

Qty \_\_\_\_\_ Teasley's chooses colors, size, flower type - \$75 each

For free design assistance, please call 615-876-3695 or email us at leigh@conventionflorist.com



Bromeliads - 12" to 18" H  
\$40 each

Qty: \_\_\_\_\_

Purple: \_\_\_\_\_

Yellow: \_\_\_\_\_

Red: \_\_\_\_\_

Orange: \_\_\_\_\_

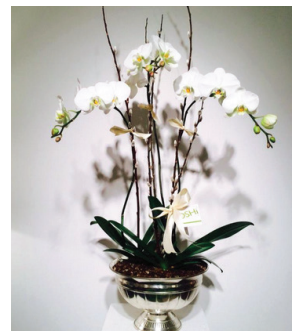
### ORCHIDS



Single Phalaenopsis Plant  
Composition \$75



Double Phalaenopsis Plant  
Composition \$125



Triple Phalaenopsis Plant  
Composition \$150

## TEASLEY'S CONVENTION FLORIST

1813 Golf Club Road  
Old Hickory, TN 37138

P: (615) 876-3695 F: (615) 876-9378

leigh@conventionflorist.com

www.conventionflorist.com

Like us on Facebook:

facebook.com/leigh.convention

Small Fern



12" H x 12" W

\$25 each

Qty: \_\_\_\_\_

Large Fern



24" H x 24" W

\$40 each

Qty: \_\_\_\_\_

Ivy



10" H x 10" W

\$40 each

Qty: \_\_\_\_\_

Pathos



12" H x 12" W

\$40 each

Qty: \_\_\_\_\_

2' Green Plants



\$50 each

Qty: \_\_\_\_\_

3' Green Plants



\$60 each

Qty: \_\_\_\_\_

Standard 4' to 6'  
Green Plants



4' @ \$60 each Qty: \_\_

5' @ \$70 each Qty: \_\_

6' @ \$80 each Qty: \_\_

### Order Cost Summary

Select Container (Included in rental Cost)

☐ black ☐ white

(Chrome, brass, terra cotta and other containers available. Call 615-876-3695 for pricing and availability.)

Item(s) \_\_\_\_\_

\_\_\_\_\_

\_\_\_\_\_

\_\_\_\_\_

\_\_\_\_\_

\_\_\_\_\_

\_\_\_\_\_

\_\_\_\_\_

\_\_\_\_\_

\_\_\_\_\_

\_\_\_\_\_

\_\_\_\_\_

\_\_\_\_\_

\_\_\_\_\_

Subtotal \_\_\_\_\_

Delivery Fee +\$30

9.25% Sales Tax \_\_\_\_\_

Total \_\_\_\_\_

Rental price includes: Decorative container, top-dressing, professional maintenance, installation and pickup.

There is a one-time \$30 delivery charge/Pick up.

**\*\*ALL ORDERS MUST BE PAID-IN-FULL PRIOR TO SHOW CLOSING\*\***

We accept cash, company check, Visa, Mastercard, American Express.

Adjustments cannot be made after the close of the show.

All rental items remain property of Teasley's.

There is a restocking fee for ordered cancelled less than 2 weeks prior to show opening.