



A Furukawa Company

InvisiLight® Optical Solutions

Supporting Multiple Dwelling Unit (MDU) and Indoor Living Unit (ILU) Applications



Features

- EZ-Bend® G.657.B3 Optical Fiber with 2.5 mm bend radius
- Complete installation kit
- Adhesive and Application Tool

Benefits

- Corner and décor friendly
- Simple and easy installation with minimal tools
- Fast, repeatable process

Product Description

OFS InvisiLight® Optical Solutions offer a revolutionary system that enables fast, easy and virtually invisible optical fiber installations for indoor living units (ILUs) and multiple dwelling units (MDUs). The InvisiLight ILU Solution consists of a single optical fiber for fiber-in-the-home (FITH) installations, whereas the InvisiLight MDU Solution consists of a 12-fiber unit for building hallways.

These InvisiLight Optical Solutions eliminate the need for large-form-factor optical fiber cables, unsightly staples, wire molding or unreliable tapes. They also make installation safer by not requiring installers to enter attics or other hard-to-access areas. The installer also uses a safe, simple and innovative process to adhere the optical fiber, resulting in a protected link that blends seamlessly into the residential or building décor.

Please refer to the InvisiLight Optical Solutions brochure that describes the solutions in greater detail.



InvisiLight ILU Solution
installed in a residence



InvisiLight MDU Solution
installed in a building hallway



TAKE A CLOSER LOOK
Almost invisible to the human eye

InvisiLight ILU Solution - Indoor Living Units

Product Overview

- Plug and Play
 - Factory terminated
 - Auto-slack storage on spool in module
- EZ-Bend® 900 µm buffered fiber compliant with G.657.B3
Fully splice compatible with outstanding macrobending performance (1 turn at 1550 nm):
 - < 0.1 dB loss at 5 mm bend radius
 - < 0.2 dB loss at 2.5 mm bend radius
- Capable of supporting a maximum of 30 outside and 30 inside corners

Standards and Testing

- Meets Telcordia GR-326 simplex connector standard
- UL-1666 Riser Flame Test
- RoHS compliant; free from heavy metals and environmentally friendly. Nonhazardous to human touch and creates negligible waste
- Fully tested for compatibility with most wall and ceiling materials (contact OFS for a complete list)
 - Easily painted with both latex and oil-based paints

InvisiLight Adhesive

- Opaque color during application; turns clear after approximately 1 hour
- **Set Time:** 15 minutes
Tack-Free Time: 45 minutes
Full Cure Time: 24 hours depending on temperature, humidity, and thickness of adhesive
- Long term storage is best at room temperature. Keep the adhesive tubes from freezing and below +38 °C.
Operating Temperature (Cured): -40 °C to +60 °C
Installation Temperature: ≥ +10 °C

InvisiLight ILU Solution - Indoor Living Units				
Connector	Insertion Loss Max./Std. Deviation	Return Loss Max.	Operating Temperature Range (Inside)	Installation Temperature Range
LC UPC	0.25/0.55	-55 dB	-10 to +60 °C	> +10 °C
LC APC	0.5/0.05	-65 dB	-10 to +60 °C	> +10 °C
SC UPC	0.3/0.05	-55 dB	-10 to +60 °C	> +10 °C
SC APC	0.5/0.05	-65 dB	-10 to +60 °C	> +10 °C

The InvisiLight ILU Solution Kit includes: a module for storing the remaining fiber on the spool, connectorized InvisiLight spool, six (6) outside corner bend limiters, six (6) inside corner bend limiters, four (4) wall plugs and caps, two (2) through-wall tools and installation instructions. The spools contain varying lengths of connectorized fiber up to 40 meters. The adhesive, adhesive application tool and pole extension tool are sold separately.

Ordering	Item	Description
InvisiLight ILU Solution Kits		
301083382	NVSLGHTE-D-SCASCA-MODULE KIT-05M-EA	Connectorized 5-meter spool, six (6) inside and outside corner protectors, module e/w adapter, four (4) wall plugs and caps, one (1) through-wall tool and instructions
301083390	NVSLGHTE-D-SCASCA-MODULE KIT-10M-EA	Connectorized 10-meter spool, six (6) inside and outside corner protectors, module e/w adapter, four (4) wall plugs and caps, one (1) through-wall tool and instructions
301099115	NVSLGHTE-D-SCASCA-MODULE KIT-20M-EA	Connectorized 20-meter spool, six (6) inside and outside corner protectors, module e/w adapter, four (4) wall plugs and caps, one (1) through-wall tool and instructions
301099123	NVSLGHTE-D-SCASCA-MODULE KIT-30M-EA	Connectorized 30-meter spool, six (6) inside and outside corner protectors, module e/w adapter, four (4) wall plugs and caps, one (1) through-wall tool and instructions
301099131	NVSLGHTE-D-SCASCA-MODULE KIT-40M-EA	Connectorized 40-meter spool, six (6) inside and outside corner protectors, module e/w adapter, four (4) wall plugs and caps, one (1) through-wall tool and instructions
InvisiLight ILU 80x80 Solution Kits		
301122099	NVSLGHTE-D-SCASCA-80x80 KIT-05M-EA	Connectorized 5-meter spool, six (6) inside and outside corner protectors, module e/w adapter, four (4) wall plugs and caps, one (1) through-wall tool and instructions
301122107	NVSLGHTE-D-SCASCA-80x80 KIT-10M-EA	Connectorized 10-meter spool, six (6) inside and outside corner protectors, module e/w adapter, four (4) wall plugs and caps, one (1) through-wall tool and instructions
301117271	NVSLGHTE-D-SCASCA-80x80 KIT-20M-EA	Connectorized 20-meter spool, six (6) inside and outside corner protectors, module e/w adapter, four (4) wall plugs and caps, one (1) through-wall tool and instructions
301117289	NVSLGHTE-D-SCASCA-80x80 KIT-30M-EA	Connectorized 30-meter spool, six (6) inside and outside corner protectors, module e/w adapter, four (4) wall plugs and caps, one (1) through-wall tool and instructions
301117297	NVSLGHTE-D-SCASCA-80x80 KIT-40M-EA	Connectorized 40-meter spool, six (6) inside and outside corner protectors, module e/w adapter, four (4) wall plugs and caps, one (1) through-wall tool and instructions
Adhesive		
301079117	NVSLGHTE-TUBE, 30ML ADHESIVE 025/PK	25-pack of adhesive (in tubes) and application tips
301079125	NVSLGHTE-TUBE, 30ML ADHESIVE 050/PK	50-pack of adhesive (in tubes) and application tips
301079133	NVSLGHTE-TUBE, 30ML ADHESIVE 100/PK	100-pack of adhesive (in tubes) and application tips
Tools		
301079109	NVSLGHTE-MINI DISPENSING TOOL	Dispensing tool for adhesive application
301079638	NVSLGHTE-TOOL BELT KIT	Tool belt kit includes case, screwdrivers, drill bits, utility knife, visual fault locator and tape measure
301115671	NVSLGHTE-Pole Extension Tool	InvisiLight pole extension tool



Through-Wall Tool and Package of Four (4) Wall Covers



80 x 80 Adapter Module or Living Unit Entry Point to connect the ILU to the outside optical fiber



Inside and Outside Corner Protectors (Package of 10 each)



Adhesive Dispensing Tool and Adhesive (in tube)



InvisiLight MDU Solution - Building Hallways

Product Overview

- Four fiber count cords are available:
 - Four (4), eight (8) and twelve (12) color-coded optical fibers, within a 2 mm outer diameter (OD) sheath
 - Sixteen (16) color-coded optical fibers, within a 2.3 mm outer diameter (OD) sheath
- EZ-Bend® Optical Fiber, compliant with G.657.B3. Fully splice compatible with outstanding macrobending performance (1 turn at 1550 nm):
 - < 0.1 dB loss at 5 mm bend radius
 - < 0.2 dB loss at 2.5 mm bend radius
- Capable of supporting a maximum of 40 outside corners with no limit on inside corners
- Field termination required at the living unit (field-installable connector or pigtail splice)
- Must be installed in riser-rated conduit in risers, in-between floors, through firewalls or when not adhered to a supporting surface

Standards and Testing

- Meets Telcordia GR-326 and GR-1435 standards
- Fiber and adhesive system is UL-1651 compliant
- The InvisiLight Multifiber cord is OFNG-FT4 and OFNR-LS
- RoHS compliant; free from heavy metals and environmentally friendly; nonhazardous to human touch and creates negligible waste
- Fully tested for compatibility with most wall and ceiling materials; easily painted with both latex and oil-based paints

InvisiLight Adhesive

- Opaque color during application; turns clear after approximately 1 hour
- **Set Time:** 15 minutes
Tack-Free Time: 45 minutes
Full Cure Time: 24 hours depending on temperature, humidity, and thickness of adhesive
- Long term storage is best at room temperature. Keep the adhesive tubes from freezing and below +38 °C.
Operating Temperature (Cured): -40 °C to +60 °C
Installation Temperature: ≥ +10 °C



Related Product

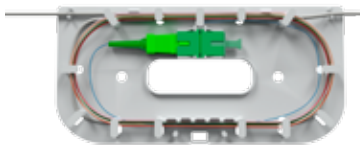
The 12-Fiber SlimBox™ Module with internal adapters is an excellent choice for terminating or splicing the 12 fibers from the InvisiLight Multifiber Cord in a telecom or hallway closet.

InvisiLight MDU Solution - Building Hallways				
Connector	Insertion Loss Max./Std. Deviation	Return Loss Max.	Operating Temperature Range (Inside)	Installation Temperature Range
LC UPC	0.25/0.55	-55 dB	-10 to +60 °C	> +10 °C
LC APC	0.5/0.05	-65 dB	-10 to +60 °C	> +10 °C
SC UPC	0.3/0.05	-55 dB	-10 to +60 °C	> +10 °C
SC APC	0.5/0.05	-65 dB	-10 to +60 °C	> +10 °C
MTP APC	0.75/0.05	-50 dB	-10 to +60 °C	> +10 °C

The InvisiLight MDU Solution kit includes: a spool of the InvisiLight Multifiber Cord with 12 EZ-Bend Optical Fibers, 12 Point-of-Entry (POE) modules, 20 outside corner bend limiters, 20 inside corner bend limiters, 12 wall plugs and caps, two (2) through-wall tools and installation instructions. The InvisiLight Multifiber Cord is available in lengths of 100 and 300 meters with custom lengths upon request. The adhesive (in tubes), adhesive application tool and pole extension tool are sold separately.

Ordering	Item	Description
InvisiLight MDU Solution Kits (16-Fiber)		
301140653	NVSLGHTHI-D-UNCUNC-CMODUL KIT-16-100M EA	Unconnectorized 16-fiber InvisiLight Multifiber Unit, 100 meters, 16 compact point-of-entry (POE) modules and components
301140661	NVSLGHTHI-D-UNCUNC-CMODUL KIT-16-300M EA	Unconnectorized 16-fiber InvisiLight Multifiber Unit, 300 meters, 16 compact point-of-entry (POE) modules and components
301140596	NVSLGHTHI-D-SASUNC-CMODUL KIT-16-100M EA	SC-APC connectorized (one end) 16-fiber InvisiLight Multifiber Unit, 100 meters, 16 compact point-of-entry (POE) modules and components
301140604	NVSLGHTHI-D-SASUNC-CMODUL KIT-16-300M EA	SC-APC connectorized (one end) 16-fiber InvisiLight Multifiber Unit, 300 meters, 16 compact point-of-entry (POE) modules and components
InvisiLight MDU Solution Kits (12-Fiber)		
301117149	NVSLGHTHI-D-SCAUNC-Module Kit-12-100M-EA	SC-APC connectorized (one end) 12-fiber InvisiLight Multifiber Unit, 100 meters, 12 point-of-entry (POE) modules and components
301139408	NVSLGHTHI-D-SCAUNC-MODULE KIT-12-200M-EA	SC-APC connectorized (one end) 12-fiber InvisiLight Multifiber Unit, 200 meters, 12 point-of-entry (Large POE) modules and components
301117156	NVSLGHTHI-D-SCAUNC-Module Kit-12-300M-EA	SC-APC connectorized (one end) 12-fiber InvisiLight Multifiber Unit, 300 meters, includes 12 point-of-entry (POE) modules and components
301117180	NVSLGHTHI-D-MTFUNC-Module Kit-12-100M-EA	MPO (Ribbon) connectorized (one end) 12-fiber InvisiLight Multifiber Unit, 100 meters, includes 12 point-of-entry (POE) modules and components
301117198	NVSLGHTHI-D-MTFUNC-Module Kit-12-300M-EA	MPO (Ribbon) connectorized (one end) 12-fiber InvisiLight Multifiber Unit, 300 meters, includes 12 point-of-entry (POE) modules and components
301117164	NVSLGHTHI-D-LCAUNC-Module Kit-12-100M-EA	LC-APC connectorized (one end) 12-fiber InvisiLight Multifiber Unit, 100 meters, includes 12 point-of-entry (POE) modules and components
301117172	NVSLGHTHI-D-LCAUNC-Module Kit-12-300M-EA	LC-APC connectorized (one end) 12-fiber InvisiLight Multifiber Unit, 300 meters, includes 12 point-of-entry (POE) modules and components
301117123	NVSLGHTHI-D-UNCUNC-Module Kit-12-100M-EA	Unconnectorized 12-fiber InvisiLight Multifiber Unit, 100 meters, includes 12 point-of-entry (POE) modules and components
301117131	NVSLGHTHI-D-UNCUNC-Module Kit-12-300M-EA	Unconnectorized 12-fiber InvisiLight Multifiber Unit, 300 meters, includes 12 point of entry (POE) modules and components
301127007	NVSLGHTHI-D-SCAUNC-CMODUL KIT-12-100M-EA	SC-APC connectorized (one end) 12-fiber InvisiLight Multifiber Unit, 100 meters, 12 compact point-of-entry (POE) modules and components
301126942	NVSLGHTHI-D-SCAUNC-CMODUL KIT-12-200M-EA	SC-APC connectorized (one end) 12-fiber InvisiLight Multifiber Unit, 200 meters, 12 compact point-of-entry (POE) modules and components
301133617	NVSLGHTHI-D-SCAUNC-CMODUL KIT-12-300M-EA	SC-APC connectorized (one end) 12-fiber InvisiLight Multifiber Unit, 300 meters, 12 compact point-of-entry (POE) modules and components
InvisiLight MDU Solution Kits (8-Fiber)		
301140638	NVSLGHTHI-D-UNCUNC-CMODUL KIT-08-100M EA	Unconnectorized 8-fiber InvisiLight Multifiber Unit, 100 meters, 8 compact point-of-entry (POE) modules and components
301140646	NVSLGHTHI-D-UNCUNC-CMODUL KIT-08-300M EA	Unconnectorized 8-fiber InvisiLight Multifiber Unit, 300 meters, 8 compact point-of-entry (POE) modules and components
301140570	NVSLGHTHI-D-SASUNC-CMODUL KIT-08-100M EA	SC-APC connectorized (one end) 8-fiber InvisiLight Multifiber Unit, 100 meters, 8 compact point-of-entry (POE) modules and components
301140588	NVSLGHTHI-D-SASUNC-CMODUL KIT-08-300M EA	SC-APC connectorized (one end) 8-fiber InvisiLight Multifiber Unit, 300 meters, 8 compact point-of-entry (POE) modules and components

Ordering	Item	Description
InvisiLight MDU Solution Kits (4-Fiber)		
301140612	NVSLGHTHI-D-UNCUNC-CMODUL KIT-04-100M EA	Unconnectorized 4-fiber InvisiLight Multifiber Unit, 100 meters, 4 compact point-of-entry (POE) modules and components
301140620	NVSLGHTHI-D-UNCUNC-CMODUL KIT-04-300M EA	Unconnectorized 4-fiber InvisiLight Multifiber Unit, 300 meters, 4 compact point-of-entry (POE) modules and components
301140562	NVSLGHTHI-D-SASUNC-CMODUL KIT-04-100M EA	SC-APC connectorized (one end) 4-fiber InvisiLight Multifiber Unit, 100 meters, 4 compact point-of-entry (POE) modules and components
301140554	NVSLGHTHI-D-SASUNC-CMODUL KIT-04-300M EA	SC-APC connectorized (one end) 4-fiber InvisiLight Multifiber Unit, 300 meters, 4 compact point-of-entry (POE) modules and components
POE Module		
301107447	NVSLGHTH-Module E/W LCA ADAPTER	Additional point-of-entry (POE) module with LC-APC adapter
301107454	NVSLGHTH-Module E/W SCA ADAPTER	Additional point-of-entry (POE) module with SC-APC adapter
301107462	NVSLGHTH-Module E/W SPLICE TRAY	Additional point-of-entry (POE) module with splice tray
301123998	NVSLGHTH-COMPACT-MODULE W/ LCA ADAPTER	Additional compact point-of-entry (POE) module with LC-APC adapter
301124004	NVSLGHTH-COMPACT-MODULE W/ SCA ADAPTER	Additional compact point-of-entry (POE) module with SC-APC adapter
Telecom Closet		
301117883	WSC1W-012-SBM0-BGE-MTMUNC-F	12-fiber SlimBox module with MPO adapter
301117891	WSC1W-012-SBM0-BGE-SCAUNC-F	12-fiber SlimBox module with SC-APC adapter
301117909	WSC4W-012-SBM0-BGE-LCUUNC-F	12-fiber SlimBox module with LC-APC adapter
301085551	WSC1W-012-SBM0-BGE-SCAUNC-F-PT	12-fiber SlimBox module with SC-APC adapter and pigtails
301117917	WSC4W-012-SBM0-BGE-LCUUNC-F-PT	12-fiber SlimBox module with SC-APC adapter and pigtails
301122404	WSC1S-012-SM11-GRY-SCAUNC-F	12-fiber SlimBox module with SC-APC internal adapters
Tools		
301120986	NVSLGHTH-MID Span Tool	12-fiber multifiber cord access tool
301079109	NVSLGHTC-MINI Dispensing Tool	Adhesive dispensing tool
301079638	NVSLGHTC-Tool Belt Kit	InvisiLight tool belt kit
301115671	NVSLGHTC-Pole Extension Tool	InvisiLight pole extension tool
301124988	TOOL, MS06-2.0MM-3.0MM BLUE	Tool to slit the jacket of 2.0 and 3.0 mm optical cords
Adhesive		
301079117	NVSLGHTC-Tube, 30ML Adhesive 25 PK	25-pack of adhesive (in tubes)
301079125	NVSLGHTC-Tube, 30ML Adhesive 50 PK	50-pack of adhesive (in tubes)
301079133	NVSLGHTC-Tube, 30ML Adhesive 100 PK	100-pack of adhesive (in tubes)



Point-of-Entry (POE) Module at the tenant apartment

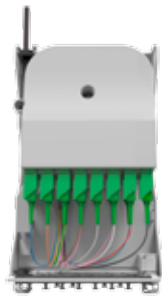


Adhesive Dispensing Tool and Adhesive (in tube)

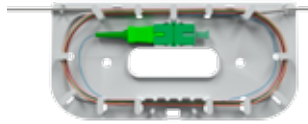


InvisiLight Multifiber Cord shipped on a spool

InvisiLight® Optical Solutions for Home and Business
100X Faster Speeds for the Internet of All Things



12-Fiber
SlimBox™ Module



Point-of-Entry Module



InvisiLight® 80x80 Wall Module



Contact OFS Today!
www.ofsoptics.com

For additional information please contact your sales representative.

You can also visit our website at www.ofsoptics.com or call 1-888-fiberhelp (1-888-342-3743) USA or 1-770-798-5555 outside the USA.



Copyright © 2017 OFS Fitel, LLC.
All rights reserved, printed in USA.

OFS Marketing Communications
Doc ID: FAP-263 Date: 1017



SlimBox is a trademark and InvisiLight and EZ-Bend are registered trademarks of OFS Fitel, LLC. OFS reserves the right to make changes to the prices and product(s) described in this document at any time without notice. This document is for informational purposes only and is not intended to modify or supplement any OFS warranties or specifications relating to any of its products or services.