



SiteLine™ Solution Features

Simplify and Streamline Your Asset Management

On Now Digital is changing the way you access and interpret electric system maintenance information. SiteLine™ asset manager empowers you to optimize your substations, transformers and core infrastructure. Plus, as a cloud-based service, it provides line of sight from almost anywhere.

Map View

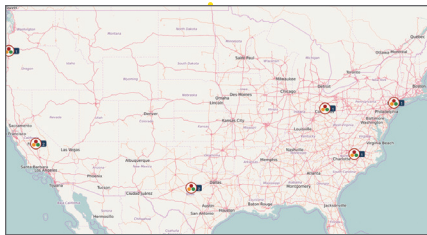
Use: Visibility for the Home Office and the Field

Focus: At-a-glance insights into critical assets across multiple locations

Features:

- Line of sight to Red/Amber/Green (RAG) location summaries
- Single-click status, issue and Priority Score summaries
- Permissions-based access to ensure “right people, right data” model
- Fast filtering for all data, criticality, asset types and regions

Benefit: Break free from binders, file cabinets and inboxes!



Status View

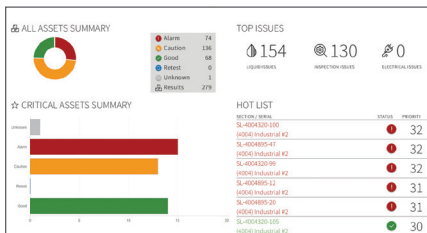
Use: Region, Division or Plant level asset oversight

Focus: Prioritizing potential areas of concern

Features:

- RAG status summaries for all assets with fast filtering ability
- Issue type breakdown for problem identification
- Isolated critical asset summary to ensure proper attention
- Prioritized Hot List to help focus efforts

Benefit: Strengthen reliability with condition-based monitoring.



Equipment View

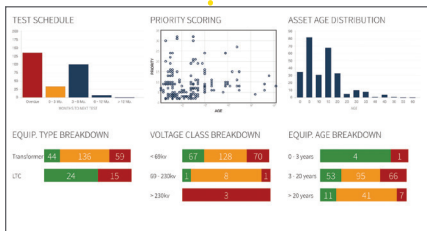
Use: Multi- or single-site asset oversight

Focus: Equipment breakdowns, onsite maintenance and engineering

Features:

- Comprehensive summary of asset statuses
- Clear indication of test schedules
- Scatter plot of Priority Score vs. Asset Age for snapshot of overall risk
- Status summary breakdowns (asset type, voltage, class, age)

Benefit: When it comes to risk, don't guess – assess!



Why SiteLine™?

SiteLine asset manager transforms complex data into simple, actionable information – so you can make better decisions faster.

Simple

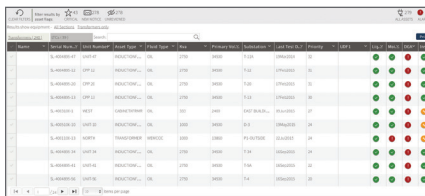
- Single location for all key asset data
- RAG status and Priority Score for simplified, condition-based monitoring
- Intuitive UI and centralized notifications

Source Agnostic

- Supports multiple import formats and web service APIs
- Easy-to-access data export that supports CSV and XML formats
- Equipment benchmarking that compares your equipment results to a database of 500,000+ assets

Customizable

- Control hierarchy, permissions and level of access
- Tailor asset health limits that drive RAG statuses
- Create regions/divisions/branches based on needs



Name	Location	Status	RAG
4000-001	Region ABC	Good	Green
4000-002	Region ABC	Warning	Yellow
4000-003	Region ABC	Alert	Red
4000-004	Region ABC	Good	Green
4000-005	Region ABC	Warning	Yellow
4000-006	Region ABC	Alert	Red
4000-007	Region ABC	Good	Green
4000-008	Region ABC	Warning	Yellow
4000-009	Region ABC	Alert	Red
4000-010	Region ABC	Good	Green

List View

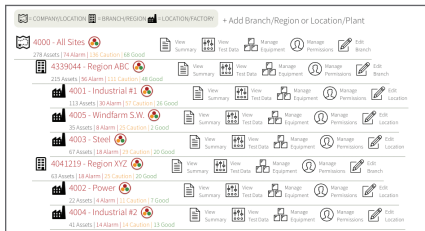
Use: Asset maintenance management

Focus: Prioritizing potential issues according to RAG status

Features:

- Tabbed asset list with fast filter and smart search/sort ability
- Quick generation of region/equipment reports
- Easy access for data export to CSV and XML
- Intuitive “hamburger” menu for access to graphing, photos, reports, etc.

Benefit: To locate your issues, just chase the red!



- 4000 - All Sites (14 Assets) (14 Locations) (14 Good)
- 4330044 - Region ABC (12 Assets) (12 Locations) (12 Good)
- 4001 - Industrial #1 (11 Assets) (11 Locations) (11 Good)
- 4005 - Windfarm S.W. (35 Assets) (35 Locations) (35 Good)
- 4003 - Steel (57 Assets) (57 Locations) (57 Good)
- 4041219 - Region XYZ (63 Assets) (63 Locations) (63 Good)
- 4002 - Power (23 Assets) (23 Locations) (23 Good)
- 4004 - Industrial #2 (41 Assets) (41 Locations) (41 Good)

Organizational List View

Use: Site administration

Focus: Editing hierarchy and managing test status limits

Features:

- Tree view for easy-to-understand organizational hierarchy
- Status summaries by region/branch
- Link to view test data, manage equipment, set up users and permissions, and edit region/branch information

Benefit: Get the right information to the right people.

Want to better monitor your electric power asset's health?
Call **330.942.0474** or visit **onnowdigital.com**. Request a live SiteLine demo today, and enjoy the view.



141 Broad Blvd., Suite 206, Cuyahoga Falls, OH 44221
330.942.0474 | solutions@onnnowdigital.com

[ONNOWDIGITAL.COM](http://onnnowdigital.com)